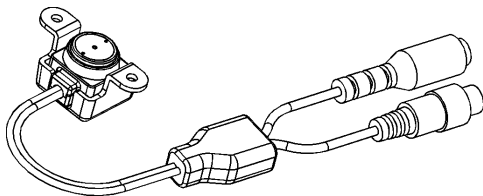


SILENT WITNESS®

Micro Imaging Devices Pin Hole Camera



Installation Instructions

Unpacking

Check that the following items are in the box:

- One Pin Hole Camera
- Installation Hardware
- One Product Warranty Card

Optional Items:

- RCA to BNC Adapter
- VA 100 Video Adapter
(accepts 6-12 VDC)
- Power Supply

Introduction

The CMOS camera is a complete video camera product that requires only a power supply in order to produce a video output signal. If you have a TV or VCR with a video input connector (typically an "RCA" style jack with a yellow inner plastic connector) you may connect the output of the camera directly into your TV or VCR.

The illustrations that follow show typical installations of the video camera product with a TV, VCR, Security Monitor, and PC system.

Most cables and cable adapter accessories including A/B switches, are available in the electronics/home theater department at any electronic/video store.

Note: The RCA to BNC adapter is supplied with the optional VA 100 video adapter for BNC style cables.

Connectors

Note: The Pin Hole camera is available in one of two versions.

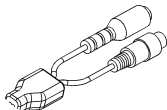
Dual Pigtail Pin Assignments

Power Connector

(5.5 mm O.D. 2.1 mm I.D. Barrel)

Center Pin (+) 6 VDC Power In

Outer Barrel (-) Power Ground




Video Connector

(RCA type connector)

Center Pin - Composite Video

Outer Flange - Video Ground

RJ-11 Modular Connector Pin Assignments



<u>Pin</u>	<u>Color</u>	<u>Function</u>
1	Red	VCC (+6 VDC)
2	Black	Ground
3	Blue	Video Ground
4	White	Video Out

Camera Power Input Requirements

Voltage:

6.0 VDC recommended*

5.35 VDC minimum (including ripple)

12 VDC maximum*

* Voltage above 6.0 VDC increases power and heat which degrades camera SIGNAL to NOISE RATIO.

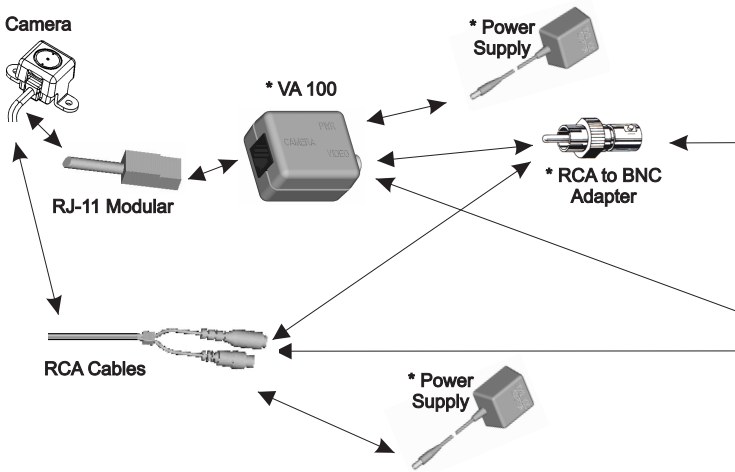
Current:

33 mA typical at 6.0 VDC

Installation

Warning: Always turn power off to all devices before making connections.

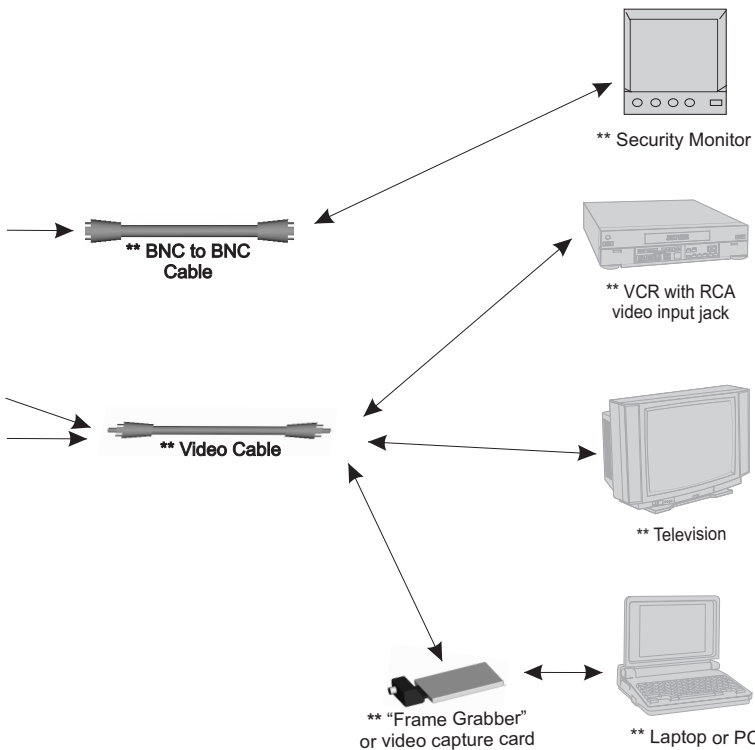
Install the camera type (NTSC or PAL) that matches your television or video display device's display format.



* Optional items that can be purchased at time of camera purchase or through your distributor:

- RCA to BNC Adapter
- VA 100 Video Adapter
- Power Supply

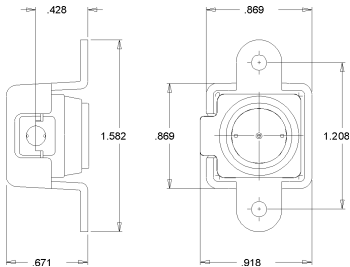
** Not supplied by Silent Witness



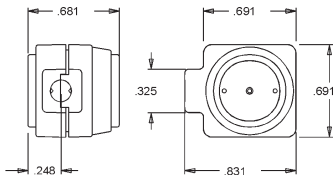
Dimensions*

*All dimensions are in inches

Mounting Bracket Dimensions



Camera Dimensions



Service

Subject to the terms and conditions listed on the **Product Warranty Card**, during the warranty period, **Silent Witness** will repair or replace, at its sole option, free of charge, any defective products returned prepaid.

In the event you have a problem with any **Silent Witness** product please call the **Service Department** for assistance or to request a **Return Authorization (RA)** number.

In the U.S.A. and Canada, call 1-800-893-9513
Or call 1-604-574-1523

Be sure to have the model number and the nature of the problem outlined for the technical service representative.

Prior authorization must be obtained for all returns, exchanges, or credits. **Items shipped to Silent Witness without a clearly identified Return Authorization (RA) number may be refused.**

Regulatory Notices

FCC Statement (U.S.A.)

This device complies with **Part 15** of the **FCC Rules**. Operation is subject to the following two conditions: (1) This device may not cause harmful interference, and (2) this device must accept any interference received, including interference that may cause undesired operation.

Industry Canada Notice

This **Class B** digital apparatus meets all requirements of the **Canadian Interference-Causing Equipment Regulations**

Cet appareil numérique de la **classe B** respecte toutes les exigences du **Règlement sur la matériel brouilleur du Canada**.

CE

The CE mark on the product indicates that the system has been tested to, and conforms with, the provisions noted within the 89/336/EEC, Electromagnetic Compatibility Directive.

Disclaimer

The information contained in this document is subject to change without notice. Silent Witness Enterprises Ltd., its affiliates, and/or its subsidiaries assume no responsibility for errors and/or omissions contained in this information.

SILENT WITNESS®

www.silentwitness.com

Silent Witness® is a registered trademark of Silent Witness Enterprises Ltd.

Sales: (888) 289-2288 6554 - 176th Street
Tech Service: (800) 893-9513 Surrey, BC V3S 4G5
Phone: (604) 574-1526 CANADA
Fax: (604) 574-7736

© 2001 by Silent Witness Enterprises Ltd. All rights reserved.
Printed in Canada

DOCUMENT 900.0005 REV 3.00

Specifications subject to change without notice.