

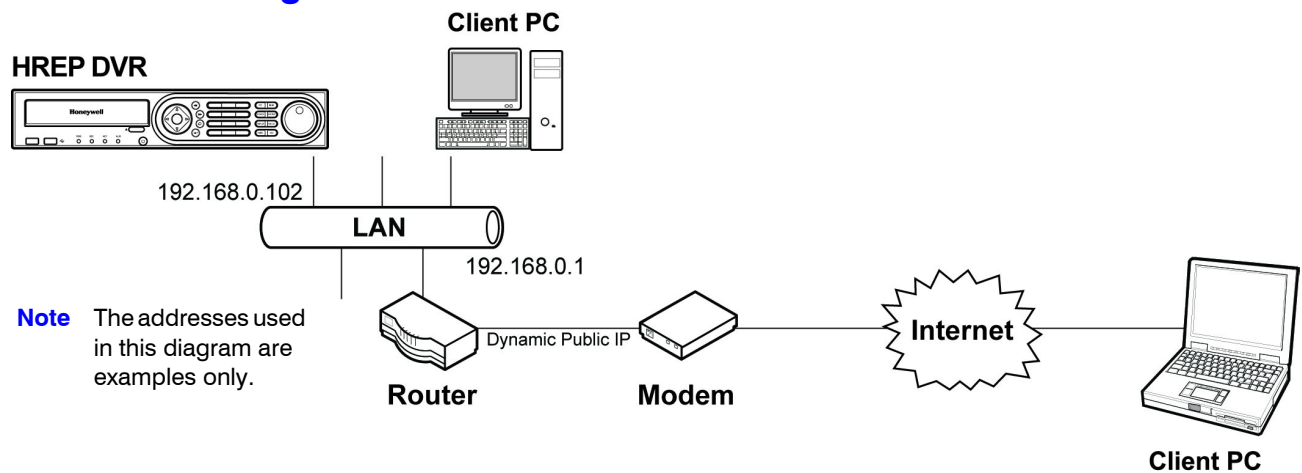
## HREP Series DVR DDNS Configuration Application Note

DDNS enables your HREP Series DVR to be remotely accessed using a Dynamic DNS server, which is commonly used if a broadband connection does not have a static IP address.

Your HREP DVR supports free DDNS service from DVRLINK.net. To enable DDNS, you have to configure your DVR. No account or hostname registration is required on the websites.

Configure port forwarding in the router (virtual server). Most routers can be configured as a virtual server so remote users who are accessing Web services through the public IP address can be automatically redirected to local servers on the LAN.

### Connection Diagram



### Testing Connections

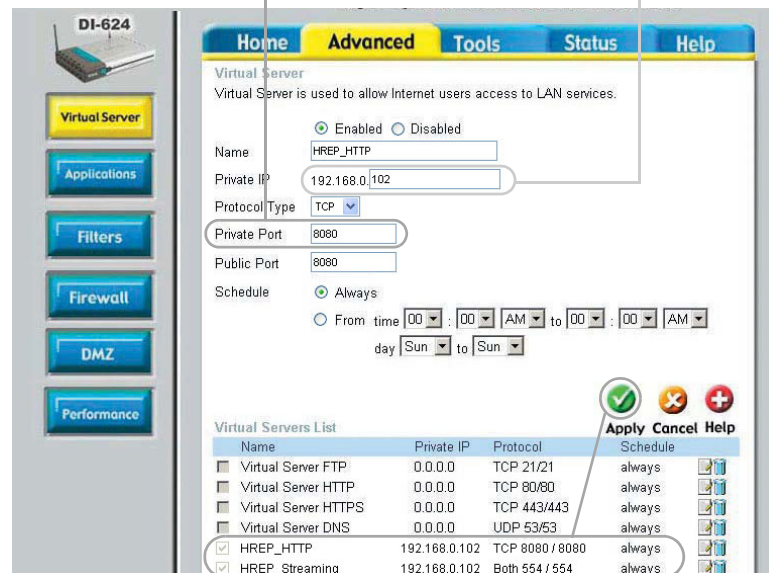
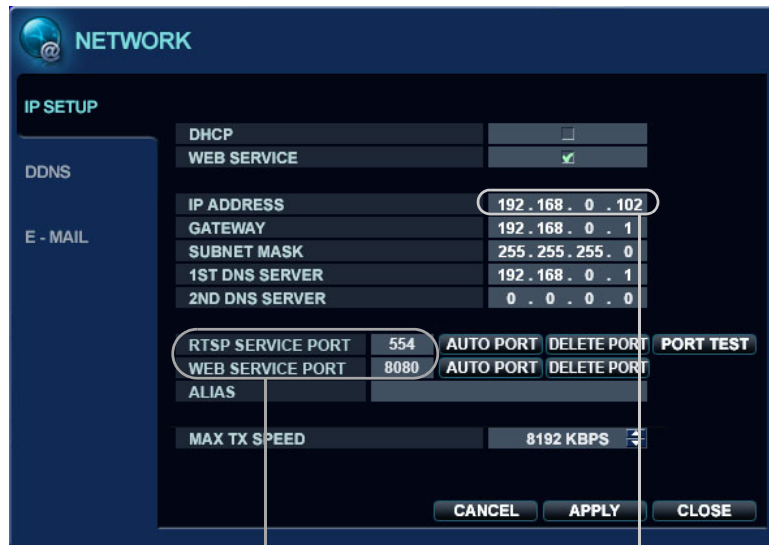
#### Testing the DVR-LAN Connection

Use the IE browser on a PC in the LAN to test web access to the DVR.

#### Testing the Router-Internet Connection

Use the IE browser on a PC in the LAN network to visit an internet web site.

## Configuring the Port Forwarding Settings



**Note** The above example shows a DLINK DI-624 home router.

1. Click **Menu > Network > IP Setup**.

- Use DHCP or manually set the network parameters:

**Note** The values used here are examples only.

DHCP	Recommended if the router supports it.
------	--

Manual	<p>IP address: <b>192.168.0.102</b></p> <p>Gateway: <b>192.168.0.1</b> (Router LAN IP)</p> <p>Subnet mask: <b>255.255.255.0</b></p> <p>1<sup>st</sup> DNS server: <b>192.168.0.1</b> (same as gateway)</p>
--------	--

- Set the RTSP (streaming) port to 554 (default).

- Set the Web (HTTP) port to 8080 (default).

2. Configure port forwarding.

- Click **AUTO PORT** to automatically configure port forwarding if the router supports UPnP (Universal plug and play).
- Manually configure port forwarding:

Router	Enter the router's Virtual Server or Port Forwarding setting.
--------	---

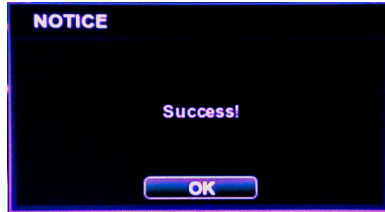
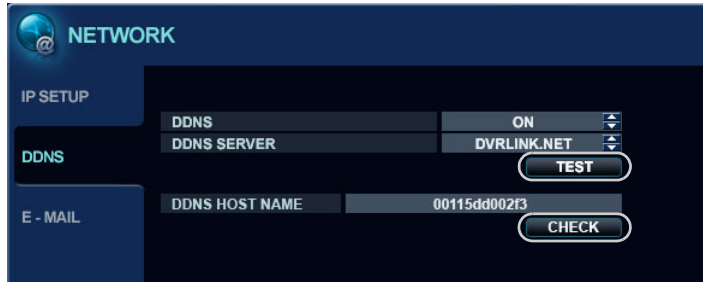
Ports	Bind ports 8080 and 554 to the corresponding private (DVR) IP address and ports.
-------	--

### For example:

Set the public port 8080 = 192.168.0.102:8080 (protocol: TCP or both TCP and UDP)

Set the public port 554 = 192.168.0.102:554 (protocol: both TCP and UDP or TCP)

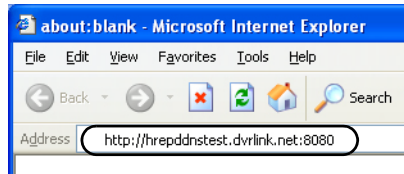
## Configuring the DDNS Settings for Your DVR



1. Click **Menu** > **Network** > **DDNS**.
2. Select the following options:
  - DDNS = ON
  - DDNS Server = DVRLINK.NET
3. Enter a unique DDNS host name. For example, **HREPDDNSTEST**. The DVR Mac address is the default.
4. Click **CHECK** to bind your public IP address to the DDNS host name. If this action was successful, you will receive a **Success!** message.
5. Click **TEST** to see if your public IP address has been bound to the DDNS host name. If this action was successful, you will receive a **Success!** message.

## Accessing Your HREP DVR through the Internet

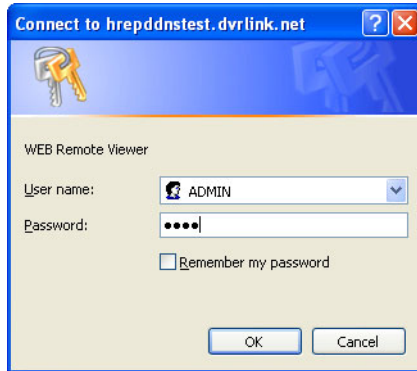
1. Enter `http://{DDNShostname}.dvrlink.net:{WebServicePort}` in the IE browser of a computer that is connected to the internet.



In this example, we have entered **http://hrepddnstest.dvrlink.net:8080**.

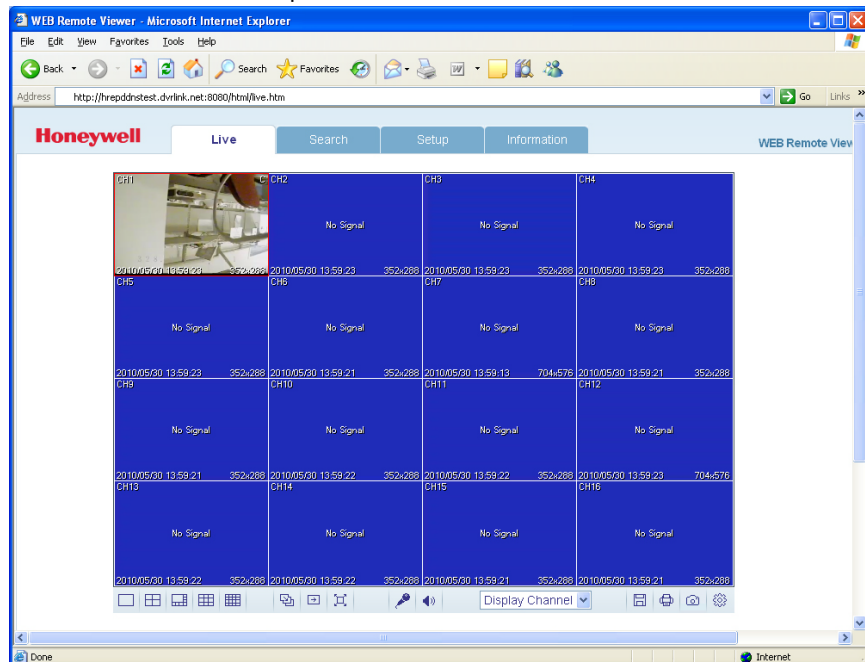
Whenever the router's public (WAN) IP address changes (for example, when the ADSL connection is lost and then restored), you can access the DVR through the above URL after a few minutes. This allows time for the DDNS service to automatically update the public IP address that is bound to the host name.

2. Enter a User name and a Password to enter the main viewer window.



The default User name for HREP is **ADMIN**; the default password is **1234**.

The main viewer window opens.



## Troubleshooting

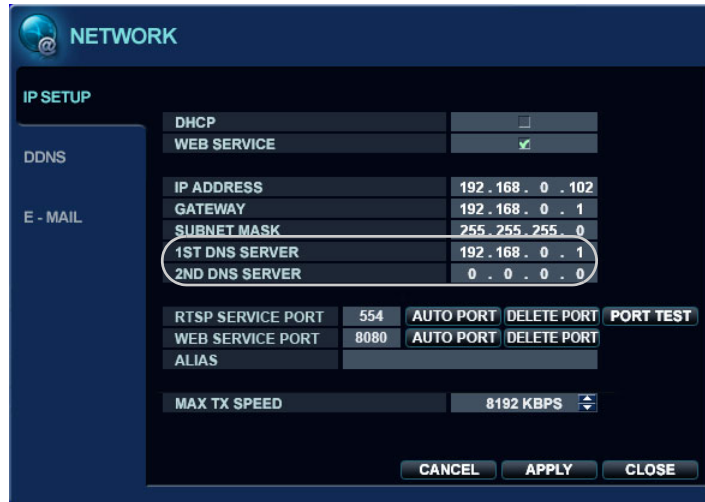
**Problem: The HTTP port has already been occupied in the router port forwarding table.**

### Solution

1. Set another number for the HTTP port in the DVR network setting.  
For example, set the DVR HTTP port to **8480**.
2. Bind the router public port to the corresponding DVR IP address and ports.  
For example, configure the public port in the router virtual server to 8480>>192.168.0.102:8480 (protocol: TCP or both TCP and UDP).
3. Enter `http://{DDNShostname}.dvrlink.net:{NewWebServicePort}` in the IE browser of a computer that is connected to the internet after you have set up the DDNS.  
For example, `http://hrepddnstest.dvrlink.net:8480`.

**Problem: Return ERROR after clicking CHECK or TEST in DVR DDNS setting.****Solution 1** Check the DNS settings on the HREP DVR.

Use a computer/PC that has the same DNS settings in the same LAN with the DVR to try visiting common web sites. If you can successfully visit these web sites, then the DNS settings on the DVR are okay.

**Solution 2** Check that the DDNS host name is duplicated with others.

Ping `{DDNShostname}.dvrlink.net` in the command window of a PC/computer that is connected to the internet.

- If the host can't be found, then the DDNS host name can be used for your DVR.

```

C:\WINDOWS\system32\cmd.exe
D:\Documents and Settings\E330077>ping hrepdvr.dvrlink.net
Ping request could not find host hrepdvr.dvrlink.net. Please check the name and
try again.
D:\Documents and Settings\E330077>_

```

- If the returned IP address is not the WAN IP address of your router (which can be found in the router's status/info web page), then assign another host name to your DVR.
- If the DDNS settings for your DVR are successful, then the Ping request returns the WAN IP address of your router.

```

C:\WINDOWS\system32\cmd.exe
Microsoft Windows XP [Version 5.1.2600]
(C) Copyright 1985-2001 Microsoft Corp.
D:\Documents and Settings\E330077>ping hrepddnstest.dvrlink.net
Pinging hrepddnstest.dvrlink.net [58.33.65.247] with 32 bytes of data:

Reply from 58.33.65.247: bytes=32 time=408ms TTL=38
Reply from 58.33.65.247: bytes=32 time=407ms TTL=38
Reply from 58.33.65.247: bytes=32 time=408ms TTL=38
Reply from 58.33.65.247: bytes=32 time=414ms TTL=38

Ping statistics for 58.33.65.247:
    Packets: Sent = 4, Received = 4, Lost = 0 (0% loss),
    Approximate round trip times in milli-seconds:
        Minimum = 407ms, Maximum = 414ms, Average = 409ms
D:\Documents and Settings\E330077>_

```

# Honeywell

**[www.honeywellvideo.com](http://www.honeywellvideo.com)  
+1.800.796.CCTV (North America only)  
[HVSsupport@honeywell.com](mailto:HVSsupport@honeywell.com)**

Document 800-07045 – Rev A – 11/10

© 2010 Honeywell International Inc. All rights reserved. No part of this publication may be reproduced by any means without written permission from Honeywell. The information in this publication is believed to be accurate in all respects. However, Honeywell cannot assume responsibility for any consequences resulting from the use thereof. The information contained herein is subject to change without notice. Revisions or new editions to this publication may be issued to incorporate such changes.