

## Rapid Eye™ Report

[www.honeywellvideo.com](http://www.honeywellvideo.com)

### REPORTING SOFTWARE FOR RAPID EYE

Rapid Eye Report is the automation and reporting software solution for Honeywell's Rapid Eye family of DVRs. Rapid Eye Report enables central station operators to provide additional recurring monthly revenue services. It offers a true enterprise solution for medium and large companies requiring analysis of multiple Rapid Eye DVRs and the cameras connected to them across multiple locations through LAN/WAN, DSL or even simple POTS telephone lines. Rapid Eye Report helps central station operators and dealers secure additional revenue by providing daily task automation, giving easy access to DVRs on multiple sites, and performing a health check of customers' video systems.

#### Market Opportunities

Rapid Eye Report is ideal for alarm monitoring companies currently using Rapid Eye Remote Admin and Remote View applications. Automated functionality enables Rapid Eye Report to generate reports, customize searches and daily summaries, and create exception reports to pinpoint suspicious activity such as back door openings, the opening of a secured safe or other similar activities. These reports can be assigned to multiple sites and scheduled to run daily, weekly or monthly. Reports are created with a quick 5-step process that guides the end user through setting the necessary parameters for creating the query, selecting the site(s) to be included, setting up the reporting schedule and the types of output needed.

#### Features

- Automated report generation
- DVR health check
- Camera health check
- Back door reports
- CSD reports
- Security event reports
- Automated multi-site firmware upgrades
- Automatic report distribution
- Import of contact data and accounting system data
- Directly importing Rapid Eye databases
- Export site data to an external database
- Synchronization of data across multiple Rapid Eye databases



## SPECIFICATIONS

System Requirements	
Operating System	Windows XP SP2/SP3, Windows Server 2003 SP2, and Windows 7 (32-bit/64-bit)
Computer/Processor	2 GHz or higher, Pentium IV – compatible CPU
Memory	At least 1 GB of available RAM. More memory generally improves responsiveness and volume handling capacity.
Hard Disk	80 GB or higher (size storage based on the number of sites and frequency of generation and timeframe of retention of the reports)
Connection	10/100 Ethernet LAN/WAN, DSL, modem
System Configuration	
Data/Report Storage	Local machine hard drive, network drive or network share, NAS, etc.
Remote Access	LAN/WAN, DSL or POTS, if equipped with modem
Connectivity	Multiple Rapid Eye sites may be connected and configured from one central database

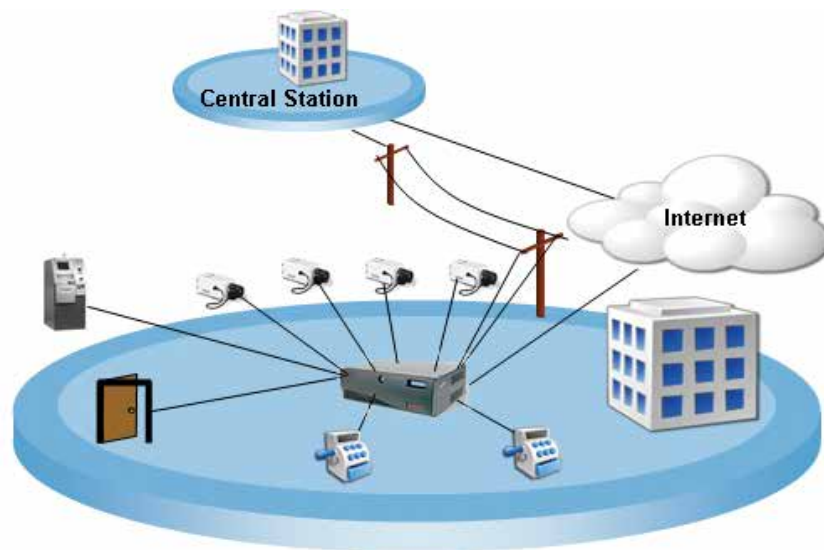
System Compatibility	
Digital Video Recorders	
Rapid Eye Hybrid HD v10 (new)	
Rapid Eye LT v9 (new)	
Backward compatible with all v4 or newer Rapid Eye units	
Rapid Eye Database Compatibility	
Rapid Eye Database v8 and above	
Multi-site Firmware Upgrade Compatibility	
Rapid Eye v10.xx to v10.xy – firmware upgrades	
Rapid Eye v9.xx to v10.xy – firmware upgrades	
Rapid Eye v9.xx to v9.xy – firmware upgrades	
Rapid Eye v8.xx to v8.xy – firmware upgrades	
Rapid Eye v7.xx to v7.xy – firmware upgrades	
Rapid Eye v6.xx to v7.xy – firmware upgrades	
Database Compatibility	
Contact Management	Import tab separated text file from Outlook, Lotus Notes, and so on
Accounting	Import tab separated text file
User Rights	Rapid Eye – import and export for full database synchronization

# Rapid Eye™ Report

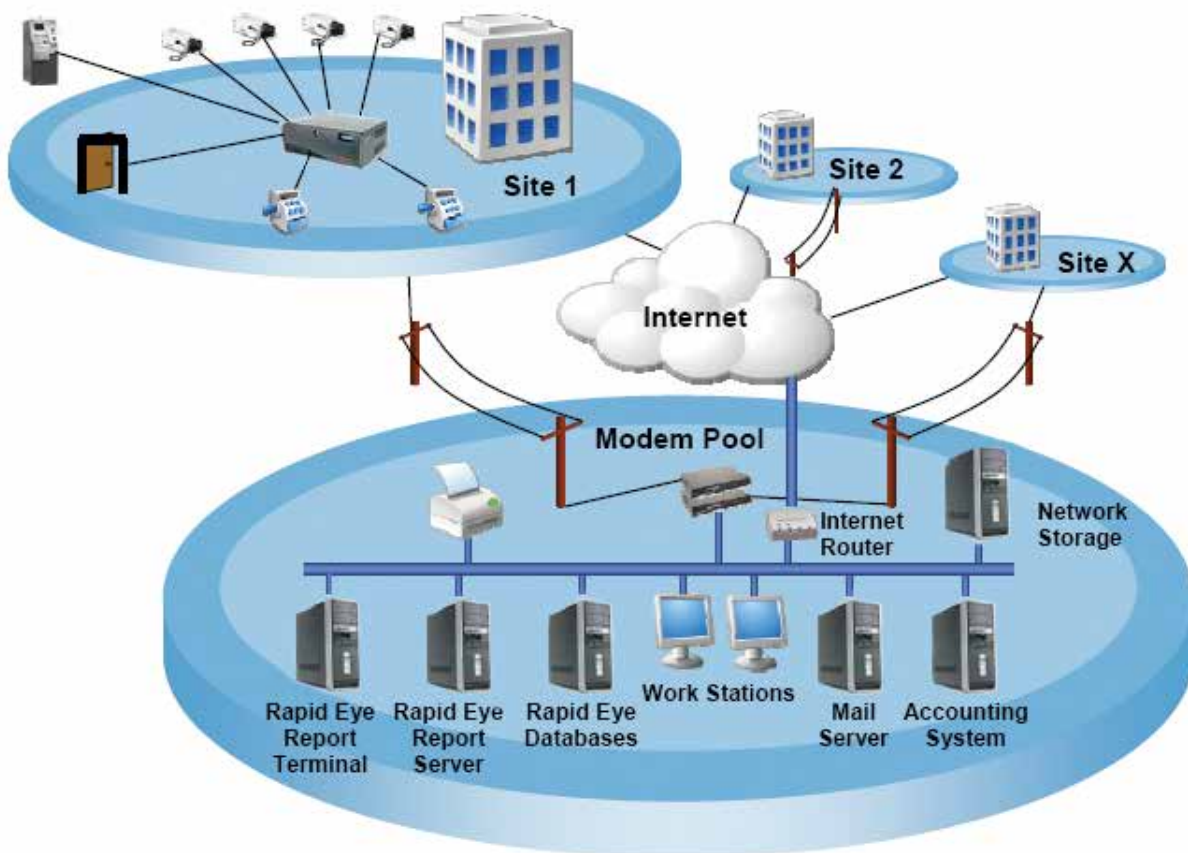
www.honeywellvideo.com

## SYSTEM DIAGRAM

### Typical Single Site



### Central Station with Multi-Site Setup



# Rapid Eye™ Report

www.honeywellvideo.com

## ORDERING INFORMATION

Ordering	
HRERT	FREE 90-day trial (unlimited number of Rapid Eye units). Try Rapid Eye Report for FREE and then upgrade for up to 10 Rapid Eye units for 1 year, FREE.
HRER10	Software license to access up to 10 Rapid Eye units. FREE upgrade after 90-day trial
HRER25	Software license to access up to 25 Rapid Eye units
HRER50	Software license to access up to 50 Rapid Eye units
HRER100	Software license to access up to 100 Rapid Eye units
HRER250	Software license to access up to 250 Rapid Eye units
HRER500	Software license to access up to 500 Rapid Eye units
HRER10M-XX*	Software maintenance agreement fees for HRER10 for year 20XX
HRER25M-XX*	Software maintenance agreement fees for HRER25 for year 20XX
HRER50M-XX*	Software maintenance agreement fees for HRER50 for year 20XX
HRER100M-XX*	Software maintenance agreement fees for HRER100 for year 20XX
HRER250M-XX*	Software maintenance agreement fees for HRER250 for year 20XX
HRER500M-XX*	Software maintenance agreement fees for HRER500 for year 20XX

\* Includes software upgrades and fixes for one year. First year support covers 15 months to allow for delivery, setup, and so on. Subsequent years cover 12-month periods.

**Automation and Control Solutions**  
Honeywell Security Products Americas  
2700 Blankenbaker Pkwy, Suite 150  
Louisville, KY 40299  
1.800.323.4576  
www.honeywell.com

L/RERPRTD/D  
July 2014  
© 2014 Honeywell International Inc.

